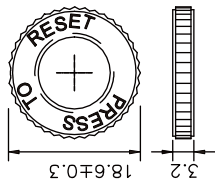
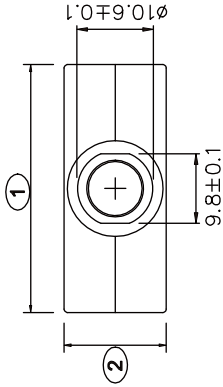
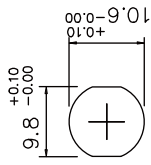


Plastic Integrated Kunrinut



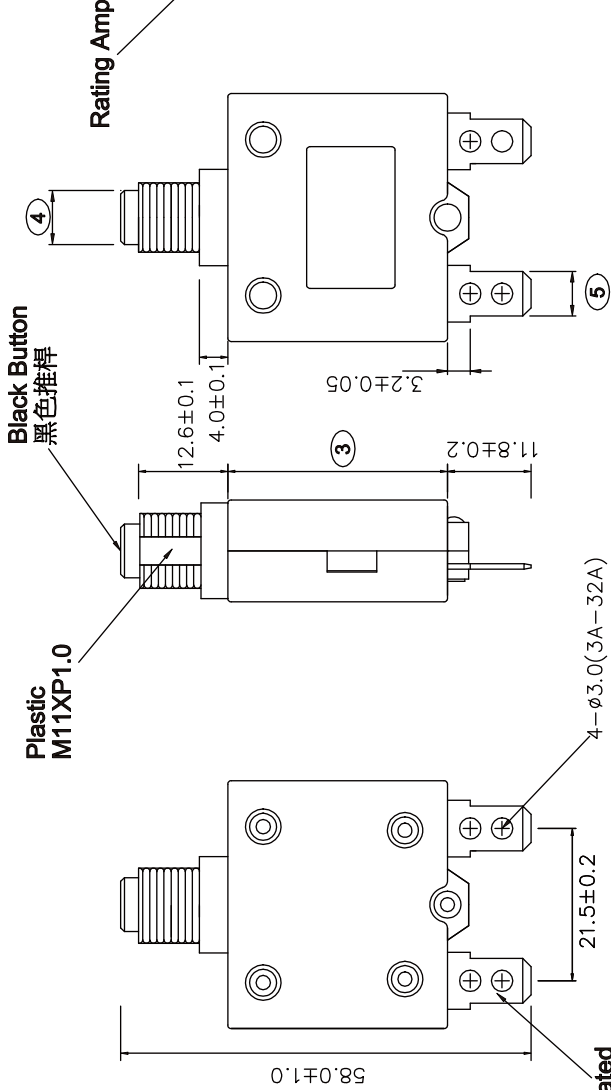
Panel Cutout



TOLERANCE	
DIMENSION	TOLERANCE
XX.XX	±0.05
XX.X	±0.1
XX	±0.15
ANGLE	TOLERANCE
X	±1°
XX	±0.5°

3Amp-50Amp (sec)		
OverLoad	3A~30A	31A~50A
600%	0.45~1.2	0.68~2.4
500%	0.58~1.8	0.8~3.2
400%	0.8~5.0	1.8~4.5
300%	1.8~5.5	3.2~7.7
200%	5.0~28.0	7.8~40.0
150%	Trip in 1 Hour	
100%	Hold, No Trip	

NO.	Dimensions
1	35.0±0.2
2	14.4±0.2
3	31.0±0.2
4	∅7.5±0.1
5	6.35±0.05
6	0.80±0.03 3~32A 1.00±0.03 33~50A



Marking:



- 備註:
- 1.XXA 表示額定電流. XXA is Rating Amp.
 - 2.安規 Approve mark:
 CULI 3A~50A 125/250VAc
 TUV 3.0A~30.0A 125/250VAc; 32Vdc
 CCC 3.0A~30.0A 125/250VAc
 CSA 3~30A TC1/OL1/US 125VAC 400A
 3. 漏電保護時, 溫度為 35±5°C, 加熱時間為 30 秒內, 最多不可超過 5 秒。
 When in stove processing temperature is 23±5°C, time is 3-5sec;
 60W winding iron processing, temp is 350±5°C, within 3 secs, can't over 5 sec.
 4. 符合歐盟 RoHS 指令 2002/95/EC 要求. (檢驗使用排除條款)
 The product accord with the requirement of ROHS(EU 2002/95/EC)
 Contacts use Exempted item of RoHS Directive 2010/571/EU 8(a)
 5. (X) 表示必檢尺寸, The size of the need to check

REVISION	DESCRIPTION	REVISED BY	TOLERANCES .X ± .XX ±	DESIGNED BY	ANGLE 1/2	SCALE	UNIT	PART NAME	DWG NO
△A				Alice	蔡	SCALE	mm	98 SPEC DRAWING	
△A						DATE			
△A									
△A	2013.05.14 換新圖框, 重新出圖	ALICE WU					2013.05.14	98-XX-P1B14-P00	WS2228-1A